



MICRO COMPONENT SYSTEM

- UX-VJ5-W** —Consists of CA-UXVJ5-W and SP-UXVJ5-W
- UX-VJ5-V** —Consists of CA-UXVJ5-V and SP-UXVJ5-V
- UX-VJ5-G** —Consists of CA-UXVJ5-G and SP-UXVJ5-G
- UX-VJ5-P** —Consists of CA-UXVJ5-P and SP-UXVJ5-P
- UX-VJ5-B** —Consists of CA-UXVJ5-B and SP-UXVJ5-B
- UX-VJ5-T** —Consists of CA-UXVJ5-T and SP-UXVJ5-T
- UX-VJ3-W** —Consists of CA-UXVJ3-W and SP-UXVJ3-W
- UX-VJ3-G** —Consists of CA-UXVJ3-G and SP-UXVJ3-G
- UX-VJ3-B** —Consists of CA-UXVJ3-B and SP-UXVJ3-B

INSTRUCTIONS

For customer use:

Enter below the Model No. and Serial No. which are located either on the rear, bottom or side of the cabinet. Retain this information for future reference.

Model No.
Serial No.

Made for
iPod iPhone iPad

COMPACT DIGITAL AUDIO **USB** Music Recording (Only for UX-VJ5)

Radio Data System (Europe only)
MP3/WMA

GVT0330-001D(B/J/UJ/US/UN/UB/UX/A/UH)

0411WKMMDWJMM

Thank you for purchasing a JVC product.

©2011 Victor Company of Japan, Limited

In this manual...

- Illustrations of UX-VJ5 are mainly used for explanation.
- The remote control buttons are used for explaining the operations unless mentioned otherwise. However, if the System has the same or similar button names, they can also be used for the operations.
- "File" and "track" are used interchangeably.

Precautions

Notes on the power cord

- When you go away for an extended period of time, remove the plug from the wall outlet.
- When unplugging the System from the wall outlet, always pull the plug, not the power cord.
- Do not handle the power cord with wet hands.
- Disconnect the power cord before cleaning the System or moving the System.
- Do not alter, twist or pull the power cord, or put anything heavy on it, which may cause fire, electric shock, or other accidents.

Avoid moisture, water, dust, and high temperatures

- Do not place the System in moist or dusty places.
- If water gets inside the System, turn off the power and remove the plug from the wall outlet, then consult your dealer. Using the System in this state may cause a fire or electrical shock.
- Do not expose the System to direct sunlight or place it near a heating device.

Notes on installation

- Select a place which is level, dry and neither too hot nor too cold—between 5°C and 35°C (41°F and 95°F).
- Do not install the System in a place subject to vibrations.
- Do not put heavy objects on the System.

To prevent malfunction or damage to the System

- Do not insert any metallic objects, such as wires, hairpins, coins, etc. into the System.
- Do not block the vents.

There are no user-serviceable parts inside. If anything goes wrong, unplug the power cord and consult your dealer.

For USA-California Only

This product contains a CR Coin Cell Lithium Battery which contains Perchlorate Material—special handling may apply. See www.dtsc.ca.gov/hazardouswaste/perchlorate

Compatible iPod/iPhone/iPad models

Made for	Audio	Video
iPod nano (6th generation)	✓	✓*
iPod nano (5th generation)	✓	✓
iPod nano (4th generation)	✓	✓
iPod nano (3rd generation)	✓	✓
iPod nano (2nd generation)	✓	–
iPod touch (4th generation)	✓	✓
iPod touch (3rd generation)	✓	✓
iPod touch (2nd generation)	✓	✓
iPod touch	✓	✓
iPod classic	✓	✓
iPhone 4	✓	✓
iPhone 3GS	✓	✓
iPhone 3G	✓	✓
iPad	✓	✓

* Only for still picture

If iPod/iPhone/iPad does not play correctly, update iPod software to the latest version.

- For details about updating iPod/iPhone/iPad, check on the Apple web site <<http://www.apple.com>>.

Playable disc/file

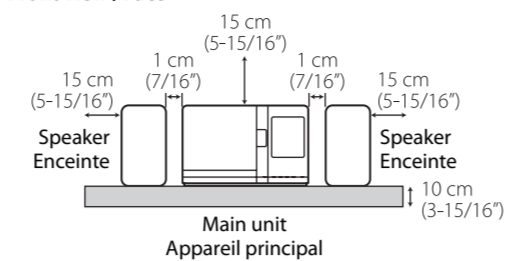
- This System can play back...
 - Audio CD and CD-R/CD-RW in Audio CD format
 - MP3/WMA files on a CD-R/CD-RW (ISO 9660 format), USB mass storage class device (maximum data transfer rate: 2 Mbps).
- This System cannot play "packet write" discs.
- This System can recognize up to 255 groups and 999 files.
- For MP3/WMA playback:
 - Some MP3/WMA files may not be played back due to their recording conditions.
 - It is recommended to record each file at a sampling rate of 44.1 kHz and at a data transfer rate of 128 kbps.
 - This System can show the Tag data.
- For playback of files on a USB mass storage class device:
 - You cannot play back files larger than 2 GB.
 - This System may not play back some USB mass storage class devices and does not support DRM (Digital Rights Management).

CAUTION: Proper Ventilation

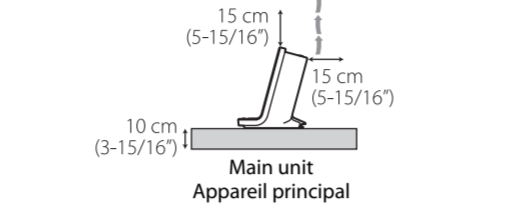
To avoid risk of electric shock and fire, and to prevent damage, locate the apparatus as follows:

1. Front: No obstructions and open spacing.
2. Sides/Top/Back: No obstructions should be placed in the areas indicated by the dimensions in the illustration.
3. Bottom: Place on the level surface. Maintain an adequate air path for ventilation by placing on a stand with a height of 10 cm or more.

Front view / Face



Side view / Côté



Specifications

Main unit (CA-UXVJ5-W/CA-UXVJ5-V/CA-UXVJ5-G/CA-UXVJ5-P/CA-UXVJ5-B/CA-UXVJ5-T/CA-UXVJ3-W/CA-UXVJ3-G/CA-UXVJ3-B)

General
Power source (DC IN): DC 19 V \approx 3.37 A
AC adaptor (AA-R1904): Input: AC 100 V – 240 V \sim , 50 Hz/60 Hz, 1.5 A – 0.9 A
Output: DC 19 V \approx 3.37 A
Power consumption (on standby): 0.50 W or less
Dimensions (approx.) (W x H x D): 290 mm x 186.5 mm x 155 mm (11-7/16" x 7-3/8" x 6-1/8")
Mass (approx.): UX-VJ5: 1.5 kg (3.3 lbs) UX-VJ3: 1.4 kg (3.1 lbs)

Amplifier
Output Power: 30 W (15 W + 15 W) at 6 Ω (10% THD)
Audio Input: AUDIO IN: Stereo mini (ϕ 3.5 mm) 500 mV /50 k Ω (at "Level 1") 250 mV /50 k Ω (at "Level 2") 125 mV /50 k Ω (at "Level 3")
SUBWOOFER OUT: 1 V/10 k Ω HEADPHONE: 5 mW/32 Ω
Speaker impedance: 6 Ω – 16 Ω

Tuner
FM frequency: For USA and Canadian models: 87.5 MHz – 108.0 MHz
For other models: 87.50 MHz – 108.00 MHz
AM (MW) frequency: For European models: 522 kHz – 1 629 kHz
For USA and Canadian models: 530 kHz – 1 710 kHz
For Saudi Arabia: 531 kHz – 1 602 kHz (at 9 kHz intervals) 530 kHz – 1 600 kHz (at 10 kHz intervals)
For other models: 531 kHz – 1 710 kHz (at 9 kHz intervals) 530 kHz – 1 710 kHz (at 10 kHz intervals)

USB (for PC IN)
USB Input: USB AUDIO
Compatible OS: Microsoft® 7 (32 bit/64 bit) Windows Vista® (32 bit, SP2 or later) Windows® XP (32 bit, SP3 or later)
• In some cases, the operations may not be possible even if one of the above OS is installed.

USB (for USB mass storage class device)
• Not equipped for UX-VJ3 USA and Canadian models.
USB specification: Compatible with USB 2.0 Full Speed
Compatible device: Mass storage class
Compatible system: FAT16, FAT32
Output power: DC 5 V \approx 500 mA
Playable bit rate: 64 kbps – 192 kbps

iPod/iPhone/iPad
Output power: iPod/iPhone: DC 5 V \approx 1 A iPad: DC 5 V \approx 2.1 A Composite

Video out: Composite

Speaker (SP-UXVJ5-W/SP-UXVJ5-V/SP-UXVJ5-G/SP-UXVJ5-P/SP-UXVJ5-B/SP-UXVJ5-T)
Speaker type: Full Range Labyrinth Type
Speakers: Woofer: 10 cm (3-15/16") cone x 1
Power handling capacity: 15 W
Impedance: 6 Ω
Frequency range: 73 Hz to 18 000 Hz
Sound pressure level: 83 dB/W·m
Dimensions (approx.) (W x H x D): 115 mm x 186.5 mm x 162 mm (4-9/16" x 7-3/8" x 6-3/8")
Mass (approx.): 0.7 kg (1.6 lbs) each
Design and specifications are subject to change without notice.
Rating label is placed on the exterior of the bottom.

Troubleshooting

If you are having a problem with your System, check this list for a possible solution before calling for service.

General	
Power does not come on.	➔ Power plug is not inserted securely. Plug it in securely.
Adjustments or settings are suddenly canceled before you finish.	➔ There is a time limit. Start the procedure again.
Unable to operate the System from the remote control.	➔ The path between the remote control and the remote sensor on the System is blocked. ➔ The battery is exhausted.
No sound is heard from the speakers.	➔ Speaker connections are incorrect or loose. ➔ Headphones are connected.
FM/AM radio	
Hard to listen to broadcasts because of noise.	➔ Antenna connection is incorrect or loose. ➔ The AM loop antenna is too close to the System. ➔ The FM antenna is not properly extended and positioned. ➔ Electrostatic discharge from your body may cause noise. If this happens, turn the System off then on again.
iPod/iPhone/iPad	
The iPod/iPhone/iPad does not play, but "CONNECT" appears on the display.	➔ The battery of iPod/iPhone/iPad is low or exhausted. Charge the battery of iPod/iPhone/iPad.
Disc/USB	
The disc/USB mass storage class device does not play.	➔ The disc is placed incorrectly. Place the disc with the label side facing forward. ➔ The disc is recorded using "packet writing (UDF file system)." It cannot be played. ➔ The USB mass storage class device is not connected properly.
"NO DATA" appears on the display.	➔ No MP3/WMA files are recorded on the USB mass storage class device.
Groups and tracks are not played back as you expect.	➔ Playing order is determined when the groups and tracks are recorded. It depends on the writing application.
The disc/USB mass storage class device sound is discontinuous.	➔ The disc is scratched or dirty. ➔ MP3/WMA files have not been properly recorded on the USB mass storage class device.
Sound from the USB mass storage class device is interrupted.	➔ Noise and static electricity may stop the sound. In this case, disconnect and connect the USB mass storage class device again after turning off the System.
The slide door does not open or close.	➔ The AC power cord is not plugged in. ➔ iPad is connected ("NO OPE" appears on the display). Disconnect it before opening the slide door. ➔ Disc ejection is prohibited. "LOCKED" appears (see "Prohibiting disc ejection" on page 2).
Timer	
Wake up Timer does not work.	➔ The System was turned on before the on-time came. The timer starts working only when the System is turned off.

Getting started

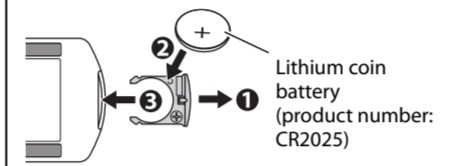
Supplied accessories

- Remote control (x 1)
 - Lithium coin battery CR2025 (x 1)
 - The battery has been installed in the remote control when shipped from the factory.
 - AC adaptor (AA-R1904) (x 1)
 - AC power cord (x 1)
 - AM loop antenna (x 1)
 - FM antenna (x 1)
 - Core filter (x 6) (For UX-VJ3 USA and Canadian models: x 5)
 - AC plug adapter (x 1) (Not supplied for USA, Canadian, European, Australian and Saudi Arabian models)
- If anything is missing, consult your dealer immediately.

Prepare the remote control

When you use the remote control for the first time, pull out the insulation sheet.

To replace the battery in the remote control



NOTES:

- Store the battery in a place where children cannot reach. If a child accidentally swallows the battery, consult a doctor immediately.
- To prevent the battery from overheating, cracking, or starting a fire:
 - Do not recharge, short, disassemble or heat the battery or dispose of it in a fire.
 - Do not leave the battery with other metallic materials.
 - Wrap the battery with tape and insulate when throwing away or saving it.
 - Do not poke the battery with tweezers or similar tools.
- Dispose of battery in the proper manner, according to federal, state, and local regulations.
- The battery (battery pack or battery installed) shall not be exposed to excessive heat source such as sunshine, fire or the like.

CAUTION:

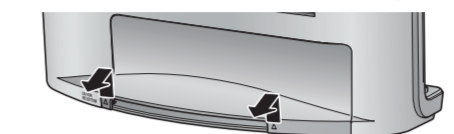
Danger of explosion if battery is incorrectly replaced. Replace only with the same or equivalent type.

Connections

NOTES:

- Make sure the antenna conductors do not touch any other terminals, connecting cords or the power cord.
- Also, keep the antennas away from metallic parts of the System, connecting cords, and the AC power cord. Otherwise, it could cause poor reception.
- DO NOT connect any other speakers than those supplied.

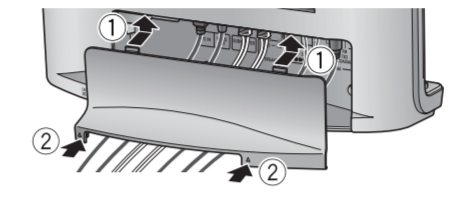
1 Remove the terminal cover on the rear panel.



2 Connect the antennas and cords.

3 Arrange the cords, then replace the terminal cover.

- Make sure that no cords are caught in the terminal cover.

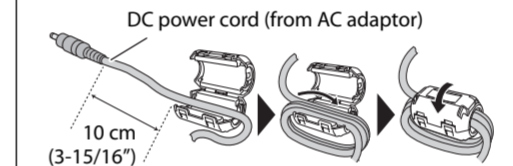


4 Connect the AC power cord to a wall outlet.

Using the core filter

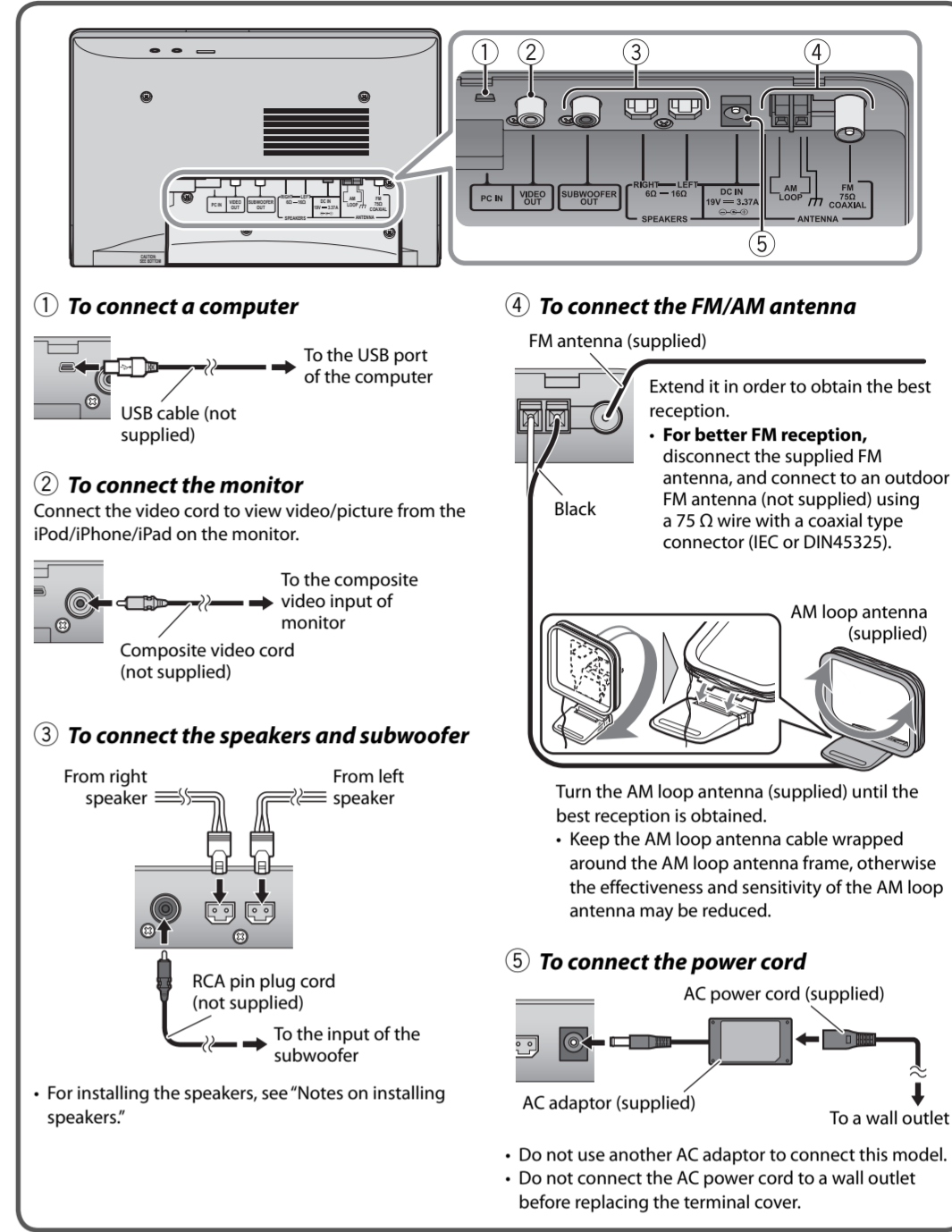
To reduce interference, be sure to attach the supplied core filter to the power cord.

Run the cable through the core filter, and wind it firmly 3 times inside. Close the core filter until it clicks shut.



- **CAUTION:** Do not damage the cord by applying expressive force when winding.

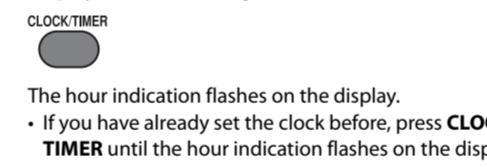
Do not connect the AC power cord until all other connections have been made.



Settings and adjustments

Setting the clock

1 Display the clock setting screen.



2 Adjust the hour and minute.



To display the clock

- While the System is turned on: press **DISPLAY** repeatedly.
- While the System is on standby: press **■**.

Display settings

Display/illumination brightness

You can dim the display window and illumination.



Display information

You can change the information shown on the display.

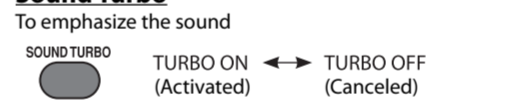


Each time you press **DISPLAY**, the information shown on the display changes.

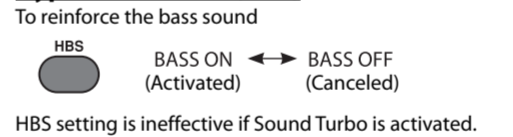
- The information shown on the display differs depending on the source.
- Tag information is shown on the display while an MP3/WMA file is played back.

Sound adjustments

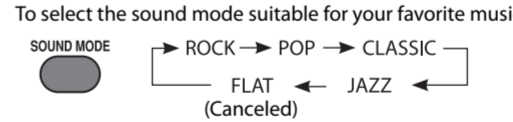
Sound Turbo



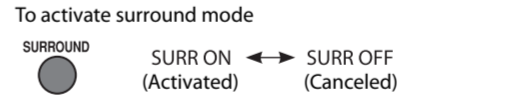
Hyper Bass Sound (HBS)



Sound Mode

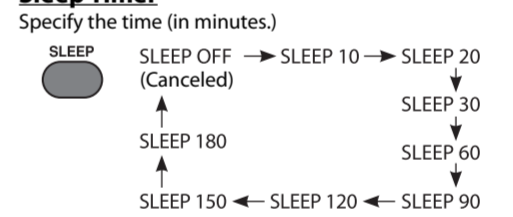


Surround Mode



Timer settings

Sleep Timer

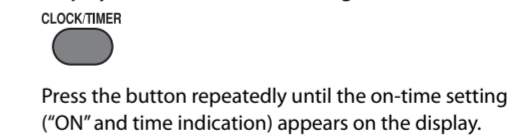


- The display dims when the Sleep Timer is activated.
- To check the remaining time until the System shuts off, press **SLEEP** once.

Wake up Timer

- By using Wake up Timer, you can wake up with your favorite music.
- Wake up Timer cannot be used if the clock has not been set.
- Tune into a station, insert a disc, or connect a USB mass storage class device/iPod/iPhone/iPad/external component to the System beforehand.

1 Display the timer contents setting screen.



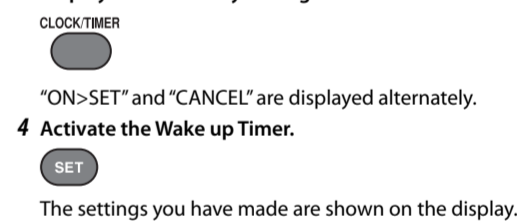
2 Set the timer contents.



- Hour and minute for the on-time ("ON") and off-time ("OFF")
- Frequency of use
 - "DAILY": Activates the timer every day.
 - "ONCE": Activates the timer once only.
- Playback source
 - Volume
 - If you select "VOL –", the volume is set to the same level as when the System was last turned off.

- To correct a misentry during the process, press **MENU/CANCEL** (for UX-VJ3 USA and Canadian models: press **CANCEL**). You can return to the previous step.
- To exit from Wake up Timer setting, press **CLOCK/TIMER** repeatedly as required.

3 Display timer standby setting screen.

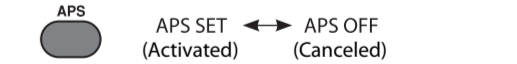


- The settings you have made are shown on the display.

- While the Wake up Timer is activated, the STANDBY/TIMER lamp lights in orange.
- To cancel the Wake up Timer, press **CLOCK/TIMER** repeatedly until "ON>SET" and "CANCEL" alternate on the display, then press **MENU/CANCEL** (for UX-VJ3 USA and Canadian models: press **CANCEL**). "TIMER OFF" appears on the display.

Auto Power Save (APS)

You can turn off the System automatically to save power.



- If one of the following conditions continues for 29 minutes, the System is turned off to save power:
 - The volume is set to "0" or muting is activated.
 - Slide door is open with "CD" selected as the source.
 - No disc is inserted, or no USB mass storage class device, iPod/iPhone, or iPad is connected with the target source selected.
- "APS" appears on the display for about 2 seconds every 1 minute after one of the above conditions occurs. Then it starts flashing about 30 seconds before the System turns off.

Basic playback operations

Initial setting:
Set the clock before using the System (see "Setting the clock" on page 1).

Using the headphones

- Be sure to turn down the volume before connecting or putting on the headphones.



Remote sensor

STANDBY/TIMER lamp

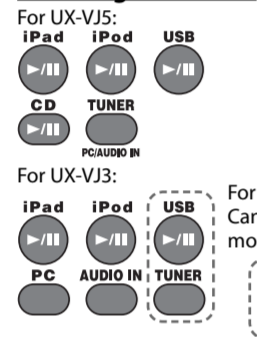
Display

DO NOT turn off the System with the volume set to an extremely high level; otherwise, the sudden blast of sound may damage your hearing, speakers, and headphones when you turn on the System or start playback.

Turning on/off the power

- The STANDBY/TIMER lamp lights in red while the System is on standby.

Selecting the source



Adjusting the volume

- To mute the volume in a moment, press **MUTING**.
- "MUTING" flashes on the display.
- To restore the volume, press **MUTING** again or adjust the volume level.

Disc/USB device

- Disc playback is available only for UX-VJ5.
- USB playback is not available for UX-VJ3 USA and Canadian models.

Inserting a disc

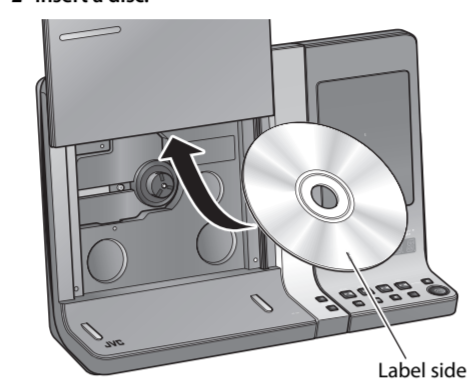
- Before opening the slide door, disconnect the iPad.**
- If you try to open the slide door with the iPad connected, "NO OPE" appears on the display and the door does not open.

On the main unit:

- Open the slide door.



- Insert a disc.



Label side

- Close the slide door.



Prohibiting disc ejection

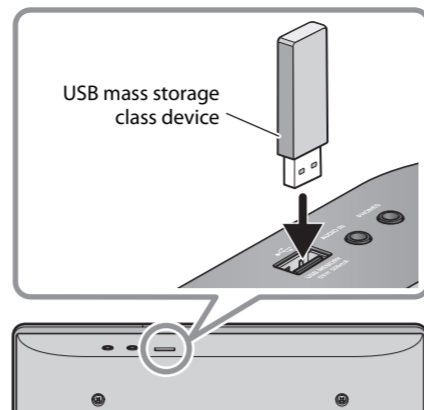
You can lock the slide door.

While the System is on standby...

On the main unit:



Connecting a USB device

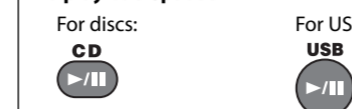


Notes on USB mass storage class device connection

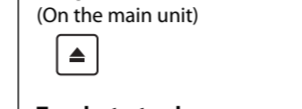
- Connect a USB mass storage class device when the System is turned off to prevent malfunction.
- Do not use a USB hub.
- When connecting with a USB cable, use a USB 2.0 cable whose length is less than 1 m.
- The USB mass storage class device is charged through the USB MEMORY terminal when "CD" or "USB" is selected as the source.
- You cannot connect a computer to the USB MEMORY terminal of the System.
- Electrostatic shock at connecting a USB mass storage class device may cause abnormal playback of the device.
- JVC bears no responsibility for any loss of data in USB mass storage class device while using this System.
- While playing back or recording a file onto a USB mass storage class device, do not disconnect the device. Doing so may cause malfunction on both the System and the device.
- This function cannot be used for Program Play.

Playback operations

To play back/pause



To open/close the slide door



To select a track



Memorizing the stopped track (Resume Play)

By activating Resume play, when you restart playback after playback has been stopped, it starts from the beginning of the stored track.



When Resume Play is activated, "RESUME" appears on the display while playback is stopped.

- To clear the stored position...
- Press **MENU** twice.
- Open the slide door.
- Disconnect the USB mass storage class device.
- This function cannot be used for Program Play.

Repeat Play^{*1}



RPT1	Repeats the current track.
RPT GR ²	Repeats the current group.
RPT ALL	Repeats all contents or programmed tracks.
RPT OFF	Cancels repeat play.

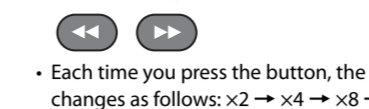
Random Play^{*1}

While playback is stopped...

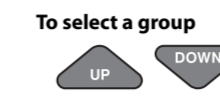


- Press **CD > II** or **USB > II** to start random play.

To fast-reverse/fast-forward a track



To select a group



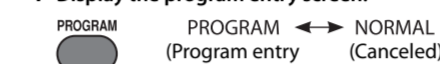
To stop playback



Program Play^{*1}

While playback is stopped...

1 Display the program entry screen.



2 Select a track number (up to 32 tracks).



- To cancel a current program entry, press **MENU/CANCEL**.
- To cancel all program entries, press and hold **MENU/CANCEL**.
- If you try to program a 33rd track, "PGM FULL" appears and the track cannot be stored.

3 Press **CD > II** or **USB > II** to start program play.

- To check the programmed contents, press **UP** or **DOWN** repeatedly while playback is stopped.
- To exit Program Play, press **PROGRAM** while playback is stopped. "NORMAL" appears on the display.
- The stored program is erased.

- ^{*1} These playback modes are canceled in the following cases:
- When the System is turned off.
 - When the source is changed.
 - When the slide door is open with "CD" selected as the source.
 - When a USB mass storage class device is disconnected with "USB" selected as the source.

^{*2} Appears only for MP3/WMA files.

Recording operations (only for UX-VJ5)

Before you start recording

- It should be noted that it may be unlawful to re-record pre-recorded tapes, records, or discs without the consent of the owner of copyright for the sound or video recording, broadcast or cable program and for any literary, dramatic, musical, or artistic work embodied therein. The use of the files recorded on a USB device with this System, except for personal use, is prohibited. Transferring or selling the files you recorded violates the copyright law and may subject you to civil and criminal penalties for copyright infringement.

- Volume and sound adjustments do not affect recordings.
- Random Play and Repeat Play are canceled during recording.
- Tracks which are recorded onto a USB mass storage class device will be converted into MP3 format (at a bit rate of 192 kbps).
- Recording does not start while "READING" is shown on the display.
- You cannot record tracks to the root directory of the USB mass storage class device.

Recording from a disc

You can record tracks from a CD to a USB mass storage class device to the USB MEMORY terminal.

Before recording, connect a recordable USB mass storage class device to the USB MEMORY terminal.

While the playback of the disc is stopped...

1 Select the first track to record.

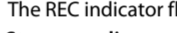


2 Select a track number (up to 32 tracks).



The REC indicator flashes.

3 Start recording.



- Do not move the System while recording. It may damage the recorded tracks.
- The System automatically creates the new group.
- When playback ends, recording automatically stops.
- To stop recording manually, press **MENU**.
- To record a single track, press **CD > USB REC** during playback of the track or while it is paused.
- If "NO REC" appears on the display when you try to record a track, the System cannot record that track.

Deleting files from a USB device

You can delete files on the connected USB mass storage class device.

While playing a file on the USB mass storage class device...

1 Select the track to delete.



2 Select a track number (up to 32 tracks).



"DELETE" appears on the display.

- To cancel deleting the file, press **MENU/CANCEL**.

3 Start deleting.

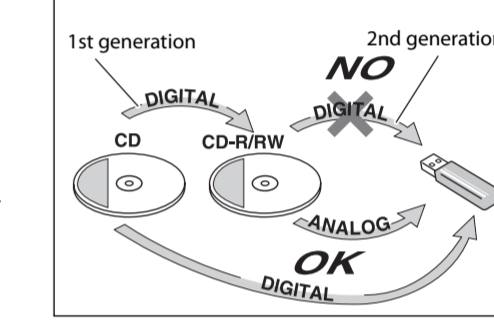


- "DELETE" appears on the display and the REC indicator lights up while deleting the file.
- When deleting is complete, "FINISH" appears on the display.

About SCMS (Serial Copy Management System)

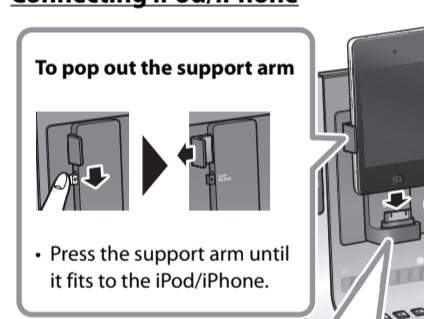
The System uses the Serial Copy Management System which allows only first-generation digital copies to be made of premastered software such as regular CDs.

If you try to record from a duplicated CD-R or CD-RW to a USB mass storage class device, "PROTECT" appears on the display.

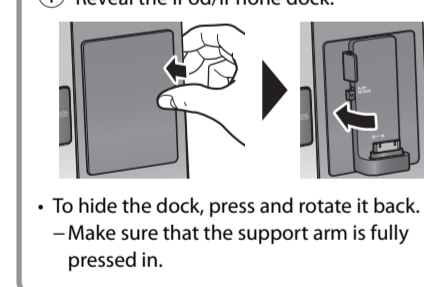


iPod/iPhone/iPad

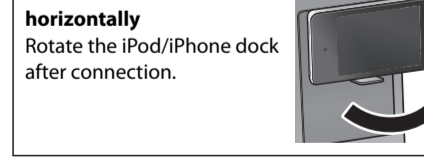
Connecting iPod/iPhone



Reveal the iPod/iPhone dock.



To connect iPod/iPhone horizontally

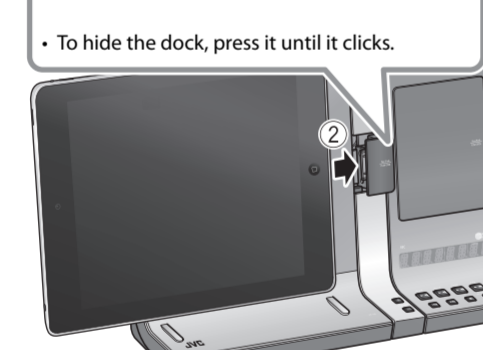
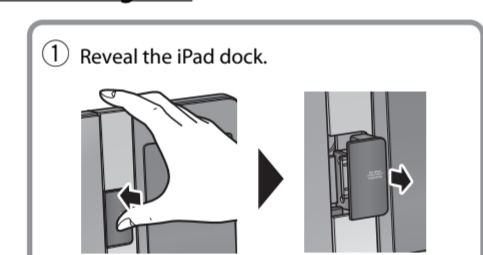


- When you connect iPod/iPhone/iPad to the dock, "CONNECT" appears on the display first, followed by "READING" and then "SUCCESS". You can play iPod/iPhone/iPad when "SUCCESS" appears.
- If iPod/iPhone/iPad is not connected properly, "AUTH ERR" appears. Connect the iPod/iPhone/iPad again.

Notes on iPod/iPhone/iPad connection

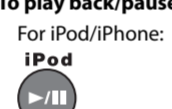
- Be sure to connect or disconnect the iPod/iPhone/iPad only when the System is on standby or turned off.
- Be sure to reduce the volume on the System to the minimum level before connecting iPod/iPhone/iPad. Adjust the volume after starting playback.
- Do not carry the System with iPod/iPhone/iPad connected. It might cause damage to the dock or you might drop the iPod/iPhone/iPad.
- Do not touch or hit the iPod/iPhone/iPad terminal pins or connector pins in the dock for iPod/iPhone/iPad directly. Doing so might cause damage to the connector pins.
- When the iPod/iPhone/iPad is not in use, it is recommended to disconnect the iPod/iPhone/iPad, then close the dock cover to protect the dock.
- You may not be able to connect an iPod/iPhone/iPad with a case depending on the product.

Connecting iPad



Playback operations

To play back/pause

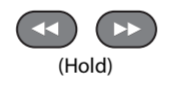


- You can also pause playback by pressing **MENU**.

To select a track



To fast-reverse/fast-forward a track



To select random playback



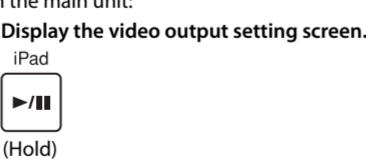
- "SHUFFLE" appears on the display.
- If you hold **RANDOM** when both iPod/iPhone and iPad are connected to the System, "DUAL SFL" appears on the display and Random Play applies to both iPod/iPhone and iPad devices.

Setting the video output of the iPod/iPhone/iPad

Before playing a video, select the appropriate video output to view a video/picture on the monitor or the iPod/iPhone/iPad.

While the System is on standby...

1 Display the video output setting screen.

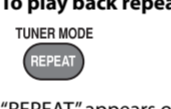


2 Select the video output.



VOUT ON	Displays video/picture on the connected monitor.
VOUT OFF	Displays video/picture on the iPod/iPhone/iPad.

To play back repeatedly



"REPEAT" appears on the display.

To put iPod/iPhone/iPad in sleep mode

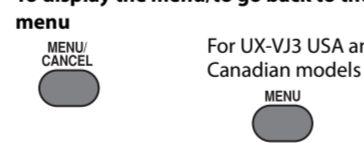


- Information shown on the display of iPod/iPhone/iPad differs depending on the model.

NOTE: Headphones cannot be used for playing back iPod/iPhone/iPad. No sound is heard if headphones are connected.
• When the headphones are connected, "HP MUTE" appears on the display.

Menu operations

To display the menu/to go back to the previous menu



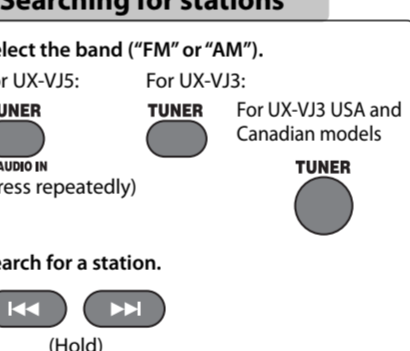
To select an item on the menu



- Notes:**
- Operate iPod touch, iPhone or iPad itself in the following cases:
- When operating the home button.
- When selecting application icons on the home screen.
- When dragging the slider.
 - Sound distortion may occur when playing back audio sources with high recording levels. If distortion occurs, it is recommended to turn off the equalizer of iPod/iPhone/iPad. For information on operating iPod/iPhone/iPad, see the instruction manual for iPod/iPhone/iPad.

FM/AM radio

Searching for stations



- The station search stops when a station of sufficient signal strength is found.
- To manually stop the search, press **LEFT** or **RIGHT**.
- When you press **LEFT** or **RIGHT** repeatedly, the frequency changes step by step.

Selecting AM interval spacing (Asia only)

Before operating the tuner, select the appropriate AM tuner interval spacing (9 kHz or 10 kHz) used in your residential area.

While the System is on standby...

On the main unit:



Improving the reception

- If the FM reception is poor
TUNER MODE: FM MONO ↔ FM AUTO (Monaural mode) (Canceled)
- When the monaural mode is activated, the reception is improved. However, the stereo effect is lost.
- To restore the stereo effect, press **TUNER MODE** again to select "FM AUTO".

If beat noise is heard while listening to AM station

- Select the appropriate AM beat-cut mode.
TUNER MODE: BEATCUT1 ↔ BEATCUT2 ↔ BEATCUT3 ↔ BEATCUT4
- If you change to another station, this setting is automatically canceled.

Presetting stations

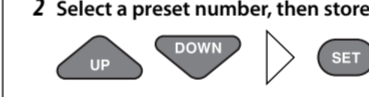
You can preset up to 30 FM stations and 15 AM stations.

While listening to a target station...

1 Display the preset channel setting screen.



2 Select a preset number, then store the station.



Tuning in to a preset station

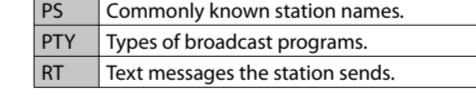


Receiving FM stations with Radio Data System (Europe only)

Radio Data System allows FM stations to send an additional signal along with their regular program signals.

- If you want to know more about Radio Data System, visit <http://www.rds.org.uk>.

To display the Radio Data System information



- "NO PS", "NO PTY", or "NO RT" appears on the display if no relevant signals are sent by a station.
- When a Radio Data System signal is not received, the frequency is displayed.

PTY search (Europe only)

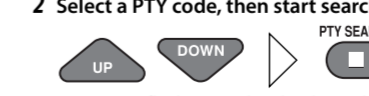
You can search for a program from the preset stations by specifying PTY code.

While listening to a station...

1 PTY SEARCH



2 Select a PTY code, then start searching.



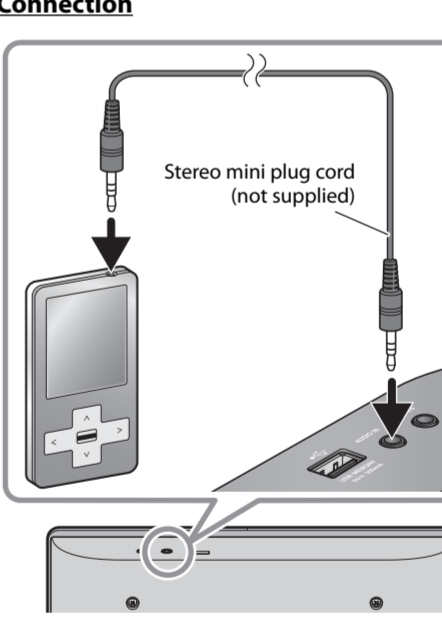
"SEARCH" flashes on the display. When the System finds the one you have selected, that station is tuned in.

- To stop searching, press **MENU/CANCEL**.
- If no program is found, "NO FOUND" appears.

External component

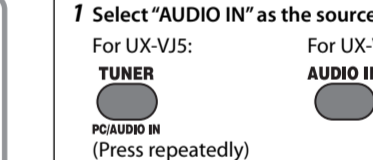
Audio player

Connection



Playback operation

1 Select "AUDIO IN" as the source.



2 Start playback of the external device.

Adjusting the audio input level

You can change the audio input level through the AUDIO IN jack.



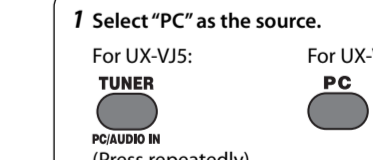
- The maximum audio input level is "LEVEL3".

Digital audio sources from a computer

- For connection, see "To connect a computer" on page 1.

Playback operation

1 Select "PC" as the source.



2 Start playback on the connected computer.

- Microsoft and Windows Media are either registered trademarks or trademarks of Microsoft Corporation in the United States and/or other countries.
- "Made for iPod," "Made for iPhone," and "Made for iPad" mean that an electronic accessory has been designed to connect specifically to iPod, iPhone, or iPad, respectively, and has been certified by the developer to meet Apple performance standards. Apple is not responsible for the operation of this device or its compliance with safety and regulatory standards. Please note that the use of this accessory with iPod, iPhone, or iPad may affect wireless performance.
- iPhone, iPod, iPod classic, iPod nano, and iPod touch are trademarks of Apple Inc., registered in the U.S. and other countries. iPad is a trademark of Apple Inc.